

FOR All Territory Served

PSC KY NO. 9

Original SHEET NO. 409

Shelby Energy Cooperative, Inc.
(NAME OF UTILITY)

CANCELLING PSC KY NO. 5

Original SHEET NO. 409

SECTION DSM

COMMUNITY ASSISTANCE RESOURCES FOR ENERGY SAVINGS PROGRAM

PURPOSE

Shelby Energy Cooperative’s Community Assistance Resources for Energy Savings (“CARES”) program provides an incentive to enhance the weatherization and energy efficiency services provided to its retail members (“end-use member”) by the Kentucky Community Action Agency (“CAA”) network of not-for-profit community action agencies. On behalf of the end-use member, Shelby Energy Cooperative will pass along an East Kentucky Power Cooperative, Inc. (“EKPC”)–provided incentive to the CAA. Shelby Energy Cooperative’s program has two primary objectives. First, the EKPC-provided incentive, passed along by Shelby Energy Cooperative to the CAA, will enable the CAA to accomplish additional energy efficiency improvements in each home. Second, this incentive will assist the CAA in weatherizing more homes.

AVAILABILITY

This U.S. Department of Energy’s Weatherization Assistance Program is available to end-use members who qualify for weatherization and energy efficiency services through their local CAA in all service territories served by Shelby Energy Cooperative.



ELIGIBILITY

HOMEOWNER QUALIFICATIONS

- A participant must be an end-use member of Shelby Energy Cooperative.
- A participant must qualify for weatherization and energy efficiency services according to the guidelines of the U.S. Department of Energy’s (“DOE”) Weatherization Assistance Program administered by the local CAA. Household income cannot exceed the designated poverty guidelines administered by the CAA.

DATE OF ISSUE January 5, 2016

MONTH / DATE / YEAR

DATE EFFECTIVE February 5, 2016

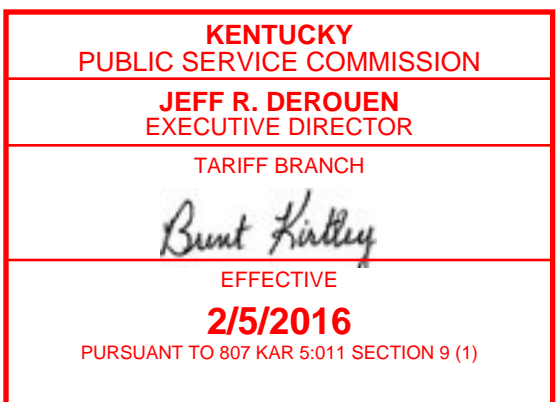
MONTH / DATE / YEAR

ISSUED BY *Debra J. Martin*
SIGNATURE OF OFFICER

TITLE President & CEO

BY AUTHORITY OF ORDER OF THE PUBLIC SERVICE COMMISSION

IN CASE NO. _____ DATED _____



FOR All Territory Served

PSC KY NO. 9

Original SHEET NO. 409.1

Shelby Energy Cooperative, Inc.
(NAME OF UTILITY)

CANCELLING PSC KY NO. 5

Original SHEET NO. 409.1

SECTION DSM

COMMUNITY ASSISTANCE RESOURCES FOR ENERGY SAVINGS PROGRAM

HOMEOWNER QUALIFICATIONS (continued)

- A participant must dwell in either a Heat Pump-Eligible Home or a Heat Pump-Ineligible Home. For purposes of this tariff:

A Heat Pump-Eligible Home is a single family or multi-family individually metered residential dwelling that utilizes electricity as the primary source of heat or that switches from wood as its primary source of heat to an electric furnace; and

A Heat Pump-Ineligible Home is a single family or multi-family individually metered residential dwelling (that does not utilize electricity as the primary source of heat but cools the home with central or window unit air conditioners. Each Heat Pump-ineligible home must also have an electric water heater and use an average of 500 kWh monthly from November to March.

CANCELLED

July 29, 2022

KENTUCKY PUBLIC SERVICE COMMISSION

PAYMENTS

HEAT PUMP ELIGIBLE HOMES

Shelby Energy Cooperative will pass along an EKPC-provided incentive to the CAA at the rates detailed below. The maximum incentive possible per household is \$2,000, which can be reached by using any combination of the following improvements not to exceed their individual maximums:

- HEAT PUMP:

Upgrading from a low-efficiency electric heat source to a heat pump will be reimbursed at a rate of 100% of the total incremental cost (material + labor) up to

DATE OF ISSUE January 5, 2016
MONTH / DATE / YEAR

DATE EFFECTIVE February 5, 2016
MONTH / DATE / YEAR

ISSUED BY *Debra F. Martin*
SIGNATURE OF OFFICER

TITLE President & CEO

BY AUTHORITY OF ORDER OF THE PUBLIC SERVICE COMMISSION
IN CASE NO. _____ DATED _____

KENTUCKY PUBLIC SERVICE COMMISSION

JEFF R. DEROUEN
EXECUTIVE DIRECTOR

TARIFF BRANCH

Brent Kirtley

EFFECTIVE
2/5/2016
PURSUANT TO 807 KAR 5:011 SECTION 9 (1)

FOR All Territory Served

PSC KY NO. 9

Original SHEET NO. 409.2

Shelby Energy Cooperative, Inc.
(NAME OF UTILITY)

CANCELLING PSC KY NO. 5

Original SHEET NO. 409.2

SECTION DSM

COMMUNITY ASSISTANCE RESOURCES FOR ENERGY SAVINGS PROGRAM

- HEAT PUMP: (continued)

a maximum of \$2,000 per household. Incremental cost is the additional cost of upgrading from a low-efficiency electric heat source to a heat pump above and beyond any costs associated with the electric furnace. The existing heat source must be electric (or switching from wood to electric) to qualify.

- WEATHERIZATION IMPROVEMENTS:

Any of the following weatherization improvements made to the home will be reimbursed at a rate of 50% of a CAAs' cost (material + labor), up to a maximum of \$1,000:

- Insulation
- Air sealing
- Duct sealing, insulating, and repair
- Water heater blanket



Health and safety measures completed at the home do not qualify for the incentive and documentation required from a CAA must adhere to the program guidelines. Quality assurance sampling will be conducted by Shelby Energy Cooperative at a rate of 10%.

HEAT PUMP INELIGIBLE HOMES

Shelby Energy Cooperative will pass along an EKPC-provided incentive to the CAA at the rates detailed below. The maximum incentive possible per household is \$750, which can be reached by using any combination of the following improvements not to exceed the maximum:

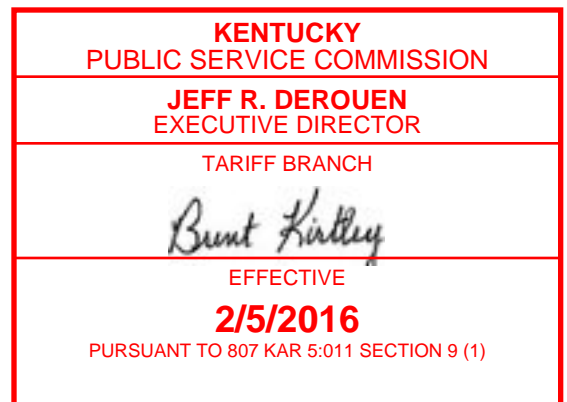
DATE OF ISSUE January 5, 2016
MONTH / DATE / YEAR

DATE EFFECTIVE February 5, 2016
MONTH / DATE / YEAR

ISSUED BY *Delma J. Martin*
SIGNATURE OF OFFICER

TITLE President & CEO

BY AUTHORITY OF ORDER OF THE PUBLIC SERVICE COMMISSION
IN CASE NO. _____ DATED _____



FOR All Territory Served

PSC KY NO. 9

Original SHEET NO. 409.3

CANCELLING PSC KY NO. 5

Original SHEET NO. 409.3

Shelby Energy Cooperative, Inc.
(NAME OF UTILITY)

SECTION DSM

COMMUNITY ASSISTANCE RESOURCES FOR ENERGY SAVINGS PROGRAM

• WEATHERIZATION IMPROVEMENTS:

Any of the following weatherization improvements made to the home will be reimbursed at a rate of 25% of a CAAs' cost (material + labor) up to a maximum of \$750:

- Insulation
- Air sealing
- Duct sealing, insulating, and repair
- Water heater blanket

Health and safety measures completed at the home do not qualify for the incentive and documentation required from a CAA must adhere to the program guidelines. Quality assurance sampling will be conducted by the owner-member at a rate of 10%.

TERM

The program is an ongoing program.



DATE OF ISSUE January 5, 2016
MONTH / DATE / YEAR

DATE EFFECTIVE February 5, 2016
MONTH / DATE / YEAR

ISSUED BY *Debra J. Martin*
SIGNATURE OF OFFICER

TITLE President & CEO

BY AUTHORITY OF ORDER OF THE PUBLIC SERVICE COMMISSION
IN CASE NO. _____ DATED _____

